

13 OCTOBER 2024 | 150KM | 100KM | WELLINGTON



BOLAND GRAVEL MONSTER



**150KM START/FINISH: KLEINE VALLEIJ ESTATE,
WELLINGTON**

**100KM START: ALLESVERLOREN WINE ESTATE
(RIEBEECK-WEST)**



BOLAND GRAVEL MONSTER

- De Villiers National Cycling is proud to host the 3rd edition of the Boland Gravel Monster, a very special gravel bike race which takes place on Sunday 13 October in Wellington.
- We invite brave souls to take on the ultimate hybrid challenge over a distance of either 150km (2000m vertical ascent) or 100km (1300m vertical ascent), traversing some of the most beautiful hybrid riding terrain in the Boland.
- **150km:** 85km gravel | 65km tar.
- **100km:** 63km gravel | 37km tar
- MOUNTAIN BIKES WELCOME



BAINSKLOOF | BOTHMASKLOOF | AND EVERYTHING INBETWEEN!

- The 150km Gravel Monster starts and finishes at Kleine Valleij Estate outside Wellington (at the bottom of Bainskloof Pass and includes the Bothmaskloof Pass in Riebeeck Kasteel in the first half and Bains Kloof Pass on the outskirts of Wellington.
- The 100km Mini Monster starts in Riebeeck West at the Allesverloren Wine Estate and completes the final 100km of the 150km Gravel Monster route.
- The 100km 'Mini Monster' excludes Bothmaskloof Pass, but includes Bainskloof Pass shortly before the finish at Kleine Valleij). It's a flat and mildly undulating run all the way to Bainskloof.
- The route is designed and managed by seasoned route director Pieter van Wyk.



BOLAND GRAVEL MONSTER



BOLAND GRAVEL MONSTER

ROUTE

- After a mild start the race heads north from Kleine Valleij and passes by Hermon before summiting Bothmaskloof Pass and doing a circle around Castle Mountain (Kasteelberg).
- At Riebeeck West, where the 100km route starts, the route turns left to run through Gouda and the outskirts of Tulbagh before turning back to Wellington on an escarpment road on the Drakenstein Mountain Range. The final obstacle is Bains Kloof Pass, shortly before the finish.
- The route presents a balanced mix of provincial and privately owned gravel roads, jeep track and quiet tarred roads. The 150km summits both the Bothmas Kloof and Bains Kloof Passes on tar, and they are followed by rewarding gravel descend trails.



BOLAND GRAVEL MONSTER



- **The Boland Gravel Monster a presents one of the most rewarding single day challenges on hybrid riding terrain in South Africa.**

RACE FACT FILE

- **Distances:** 150km and 100km
- **Elevation:** **150km:** 2000m | **100km:** 1300m
- **Terrain:** **150km:** 85km gravel, 65km tar. **100km:** 63km gravel, 37km tar
- **150km:** 2000m elevation | **100km:** 1300m elevation
- **Route touchpoints:** Wellington | Hermon | Riebeeck Kasteel | Riebeeck West | Gouda | Tulbagh | Bainskloof Pass
- **150km Start and finish:** Kleine Valleij Estate, Wellington
- **100km Start:** Allesverloren Wine Estate, Riebeeck West
- **Entry Fee:** **150km** R1150 | **100km:** R800
- **Race start:** **150km:** 07h00 | **100km:** 08h30
- **Race cut-off:** 16h30
- **4 Water points**
- **Medals to all finishers**
- **Timed by TBC**

ALL RIDERS RECEIVE A CAP



BOLAND GRAVEL MONSTER

REGISTRATION

- Bicycle Garage, Shop 1, Frater Square, 40 Main Road, Paarl on Saturday 12 October 2024, from 09:00 – 15:00
- At the start on the morning for both distances: 150km from 06h00 at Kleine Valleij and for the 100km from 07h30 at Allesverloren.

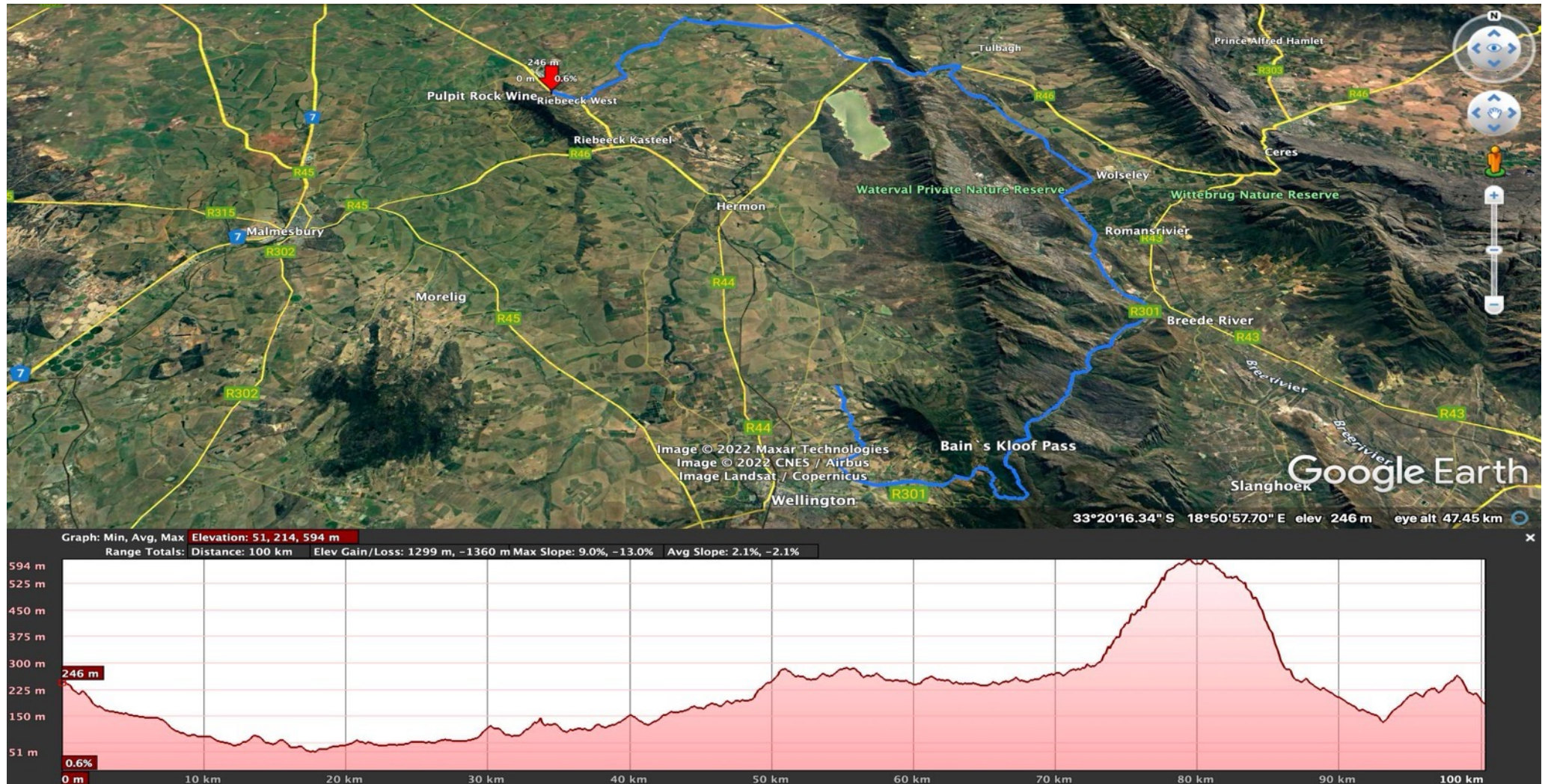
CAR TRANSFERS FROM ALLESVERLOREN:

Email: rethastigant@telkomsa.net

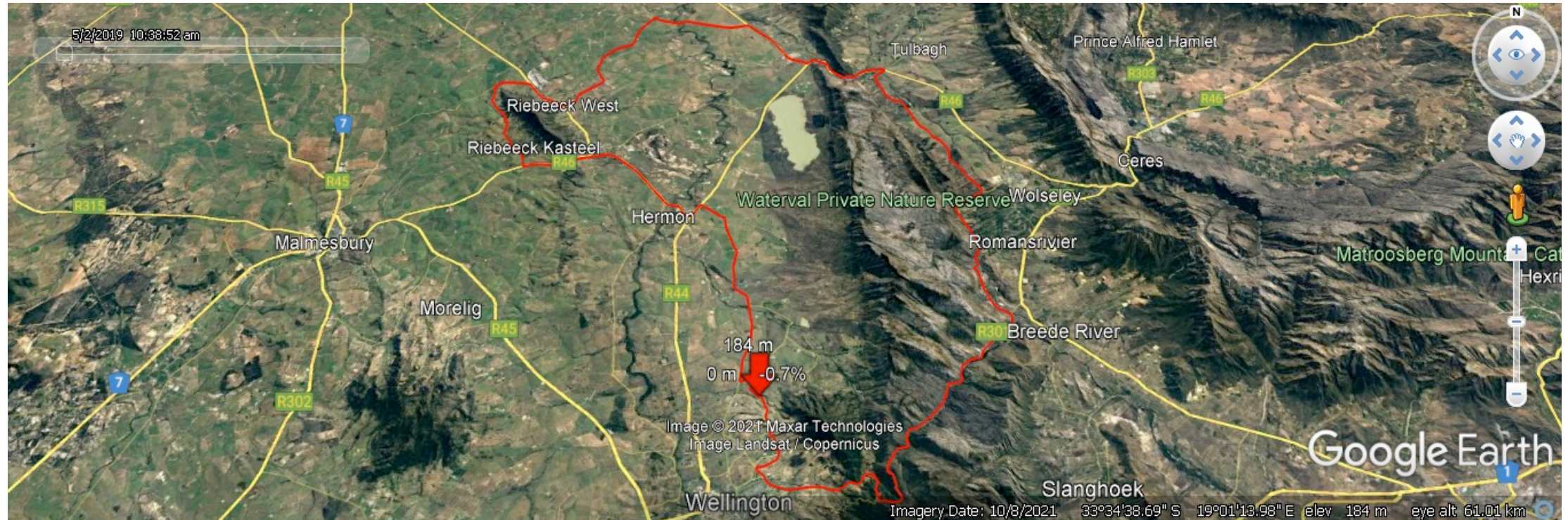


BOLAND GRAVEL MONSTER

100KM MINI MONSTER ROUTE MAP AND ELEVATION



150KM GRAVEL MONSTER ROUTE MAP AND ELEVATION



Graph: Min. Avg. Max Elevation: 51, 197, 595 m
Range Totals: Distance: 150 km Elev Gain/Loss: 1924 m, -1925 m Max Slope: 9.0%, -12.8% Avg Slope: 2.0%, -2.1%



MORE INFO AND ENTRIES

- ENTER AT www.entryninja.com
- For further information, email devillierscycling@mweb.co.za
- For route info email pjvanwyk515@gmail.com or phone 082 857 3180



BOLAND GRAVEL MONSTER