

Thank you for entering the 2025 CycleLab / KZN Schools MTB Lap Series #1 – Waterfall Schools.

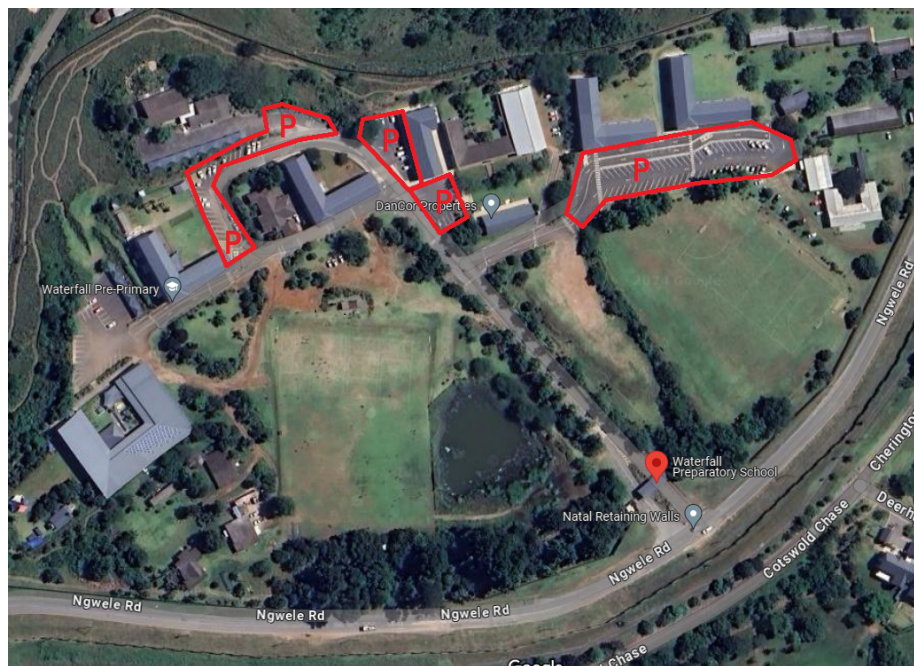
You have entered the **<Event Category>** race. We are looking forward to seeing you all on Sunday 27 July 2025.

A couple of things to take note of:

**VENUE** is Waterfall Schools

**ENTRANCE:** Ngwele Rd, Waterfall / Hillcrest

**PARKING** is available at the venue – see below image.



The weather is predicted to be a fantastic clear winter day with a breeze in the afternoon. Refreshments will be on sale at the venue, please bring CASH.

Remember as this is a school's event and you are riding to represent your school you need to ride in your **School PE / Cycling / Match Shirt!** And remember your **HELMET!** Schools are welcome to bring their Gazebos and set up around the field. \*NOTE - The TECH/FEED Zone must be kept clear.

#### **KZN Development:**

We are collecting all second hand/unused cycling kit and gear for KZN Development cycling, so clear out the bike box and the cupboards and help us fill the box!

#### **SCHOOL RELAY IS BACK AGAIN: (No entry fee applicable)**

The super exciting SCHOOL RELAY will happen again, so get your team ready!

School riders to be organised into teams of 4, All riders must be registered to race in their respective age category on the day, Schools can enter as many teams as they want.

**Primary school** – Nipper (1 or 2), Sprog (1 or 2) and 1 Sub Junior Rider (Co-ed schools must have a minimum of 1 girl)

**High school** – Sub Junior (1 or 2), Youth (1 or 2), and 1 Junior (Co-ed schools must have a minimum of 1 girl)

Primary school relay will be held between the nippers and Sprog race, High school race will be at the end of the day.

**\*PLEASE TAKE NOTE\*** of the schedule for the day and plan your trip accordingly.

### N3 Road Closure:

**The N3 will be closed between EB Clote interchange and Pinetown in both directions, on Sunday 27 July.**

- Riders travelling from the North Coast are advised to use the M19 to Pinetown and then the M13 to Hillcrest.
- Riders travelling from the South Coast Are advised to use the M7 through Queensburgh and then the N3 or M13 to Hillcrest.
- Riders travelling from Durban central are advised to use the M13 from Sherwood.

Listen to the announcer for any changes to the schedule.

Parents are allowed to **WALK** the track during course practice.

<b>Registration times -</b> <i>Primary school 07.00 - 08.30</i> <i>High School 11.30 – 12.15</i>	<b>Course Practice times -</b> <i>Primary school 07.00 - 07.45</i> <i>High School 11.40 – 12.15</i>
--	---

Time	Event	
07:00 - 08:30	Registration - Primary School	
07:00 - 07:40	Course Practice - Sub-Nipper / Nipper / Sprogs / Sub Junior - Primary School	
08:00 - 11:30	Sub-nipper Boys Sub-nipper Girls Nipper Boys Nipper Girls <b>RELAY RACE PRIMARY SCHOOLS</b> Sprog Boys Sprog Girls Sub Junior Boys - Primary School Sub Junior Girls - Primary School	Sub-nipper Prize-giving Nipper Prize-giving
11:30 - 12:15	Registration - High School	
11:40 - 12:15	Course Practice - High School	
	Sprog / Sub Junior Primary School Prize-giving	
12:20	Junior Girls Youth Girls Sub Junior High School Girls Sub Junior High School Boys	
13:30	Junior Boys Youth Boys	
14:40	RELAY RACE HIGH SCHOOLS	
15:15	High School Prize giving	

Know anyone entering last minute - Let them know late entries are taken on the day and t  
download the Finishtime Passport app to make the late entries seamless! Available on Android  
and iOS.

See you on SUNDAY!

*Regards*

*the KZN Schools MTB Series Team*