

Thank you for entering the 2025 CycleLab / KZN Schools MTB Lap Series #3 – Umhlali Prep School.

You have entered the <Event Category> race.

We are looking forward to seeing you all on Sunday 24 August 2025.

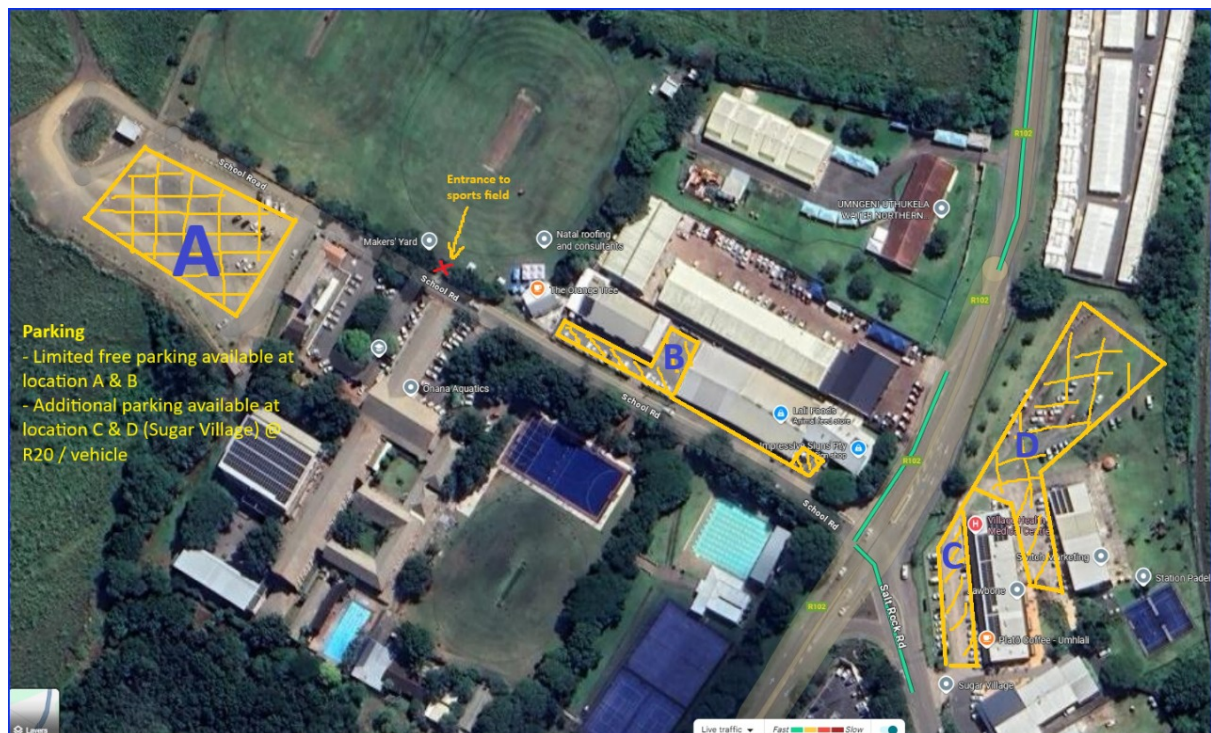
A couple of things to take note of:

VENUE is Umhlali Preparatory School

ENTRANCE: School Rd, Umhlali, Balito

PARKING is limited at the venue, on the open spaces behind the school, in the school parking lots and along the road. Please be considerate when parking so as to NOT, block traffic flow, access for people and or businesses – see below image A, B, C and D are parking options.

NO DOGS ARE ALLOWED ON SCHOOL PREMISES



The weather is predicted to be a perfect day for riding, slightly overcast and cool. Refreshments will be on sale at the venue, please bring CASH.

Remember as this is a school's event and you are riding to represent your school you need to ride in your **School PE / Cycling / Match Shirt!** And don't forget your **HELMET!**

Schools are welcome to bring their Gazebos and set up around the field. *NOTE - The **TECH/FEED** Zone must be kept clear. – please confirm with kznschoolscycling@gmail.com if you are bringing a school gazebo.

SCHOOL RELAY IS BACK

We have a super exciting event returning to our Schools Series Schedule on the day – SCHOOL RELAY!

Get your school riders organised into teams of 4

All riders must be registered to race in their respective age category on the day

Schools can enter as many teams as they want.

Primary school – Nipper (1 or 2), Sprog (1 or 2) and 1 Sub Junior Rider (Co-ed schools must have a minimum of 1 girl)

High school – Sub Junior (1 or 2), Youth (1 or 2), and 1 Junior (Co-ed schools must have a minimum of 1 girl)

The Schools RELAY RACE has no entry fee.

Primary school relay will be held between the nippers and Sprog race, High school race will be at the end of the day.

PLEASE TAKE NOTE of the schedule for the day and plan your trip accordingly.

N3 full closure (both directions) between St James Avenue (Pavilion Shopping Centre) and the M7 Farningham Ridge Interchange from 16:30 on Saturday, 23 August 2025 to 05:00 on Monday, 25 August 2025

Listen to the announcer for any changes to the schedule.

Parents are allowed to **WALK** the track during course practice.

Registration times – <i>Primary school 07.00 - 08.30</i> <i>High School 10.00 – 11.15</i>	Course Practice times – <i>Primary School 07.00 - 07.30</i> <i>High School 11.15 – 11.45</i>
--------------------------------------------------------------------------------------------------------	-----------------------------------------------------------------------------------------------------------

Time	CALL UP TIME	Event	
07:00 - 08:30		Registration - Primary School	
07:00 - 07:40		Course Practice - Primary School	
08:00	07:40	Sub-nipper Boys	11:00 Sub-nipper Prize-giving Nipper Prize-giving
08:50	08:30	Nipper Boys	
09:40	09:20	Nipper Girls	
		Sub-nipper Girls	
10:05		RELAY RACE PRIMARY SCHOOLS	
10:55	10:35	Sub Junior Boys - Primary School	
		Sprog Boys	
		Sub Junior Girls - Primary School	
		Sprog Girls	
11:00 - 12:00		Registration - High School	
12:15		SPROG / Sub Junior Primary School Prize-giving	
11:55 - 12:30		Course Practice - High School	

12:45	12:25	Junior Girls Youth Girls Sub Junior High School Girls Sub Junior High School Boys	
13:50	13:30	Junior Boys Youth Boys	
15:05		RELAY RACE HIGH SCHOOLS	
15:35		Sub Junior, Youth & Junior Girls Prize giving	

Regards

the KZN Schools MTB Series Team